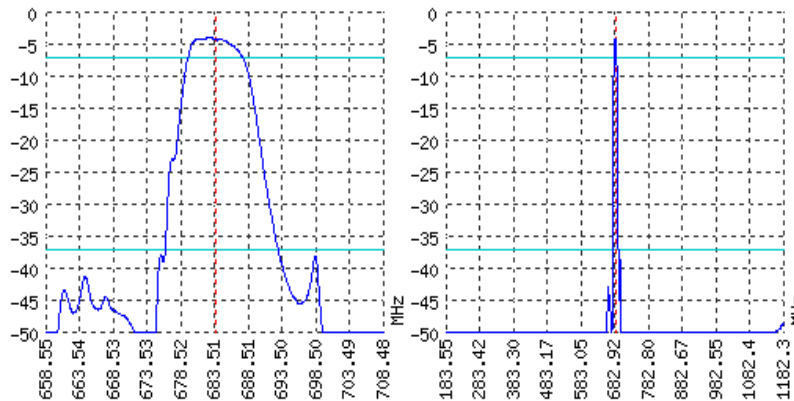


Looking for information on other SAW devices at: <http://aec-pro.com/filters.php>

Designed by: Ltd. AEC Design

Mass production: Ltd. AEC

TYPICAL PERFORMANCE



SPECIFICATIONS

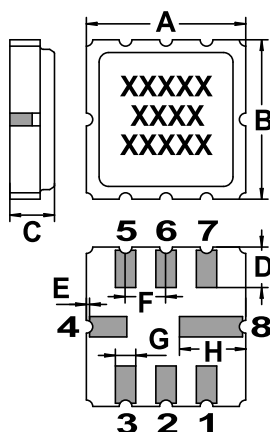
| Parameter             | Unit | Minimum | Typical              | Maximum |
|-----------------------|------|---------|----------------------|---------|
| Central frequency     | MHz  | 683.3   | 683.55               | 683.8   |
| Insertion loss        | dB   | -       | -                    | 5       |
| Bandwidth at -3 дБ    | MHz  | 7.8     | 8.2                  | 8.6     |
| Bandwidth at -33 дБ   | MHz  | -       | -                    | 40      |
| Amplitude ripple      | dB   | -       | 0.7                  | 1       |
| Group Delay Ripple    | ns   | -       | -                    | -       |
| Ultimate rejection    | dB   | -       | 60                   | -       |
| Operating temperature | °C   | -55     | 22                   | +85     |
| Substrate             | -    | -       | Lithium tantalate 36 | -       |

Notes:

- For information. Order a CKTH.433561.151 TY for a complete and updated data.
- Specification valid for measurements in AEC test fixture.

CASE QCC 8

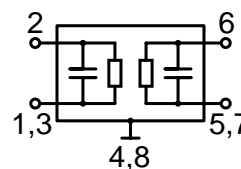
MATCHING



<http://aec-pro.com/cases.php>



| DIMENSIONS (mm) |      |
|-----------------|------|
| A               | 5    |
| B               | 5    |
| C               | 1.4  |
| D               | 1.27 |
| E               | 0.1  |
| F               | 1.27 |
| G               | 0.64 |
| H               | 2.08 |



| Input 50 Ohm |   | Output 50 Ohm |   |
|--------------|---|---------------|---|
| L1, nH       | - | L2, nH        | - |
| C1, pF       | - | C2, pF        | - |

Signal input: 2  
 Ground (input): 1,3  
 Signal output: 6  
 Ground (output): 5,7  
 Ground: other pin

\*Matching condition depends on PCB layout.

Recommendations:

- See the relevant ЦПАП for maximum permissible input signal power in the bandwidth.
- Input signal amplitude in the stop band is limited to 5 V.
- DC voltage at the input (output) of the filter should not exceed 10 V.
- It is recommended to include the coupling capacitor between the device and the generator (load).
- SAW filters are sensitive to static electricity, therefore corresponding precautions should be taken while working with them.
- Do not expose the device to frequency vibrations more than 5 kHz. Do not use ultrasonic cleaners.

Design and production SAW filters, resonators, delay lines, sensors.

**AEK** Ltd. AEC Mass production. Acceptance - QCID.  
[aec@aec-pro.com](mailto:aec@aec-pro.com) | tel./fax (812)252-93-70

**AEC** Ltd. AEC Design Design and production. Military acceptance.  
[admin@aec-design.com](mailto:admin@aec-design.com) | tel.(812)377-04-26 | fax.(812)364-60-69